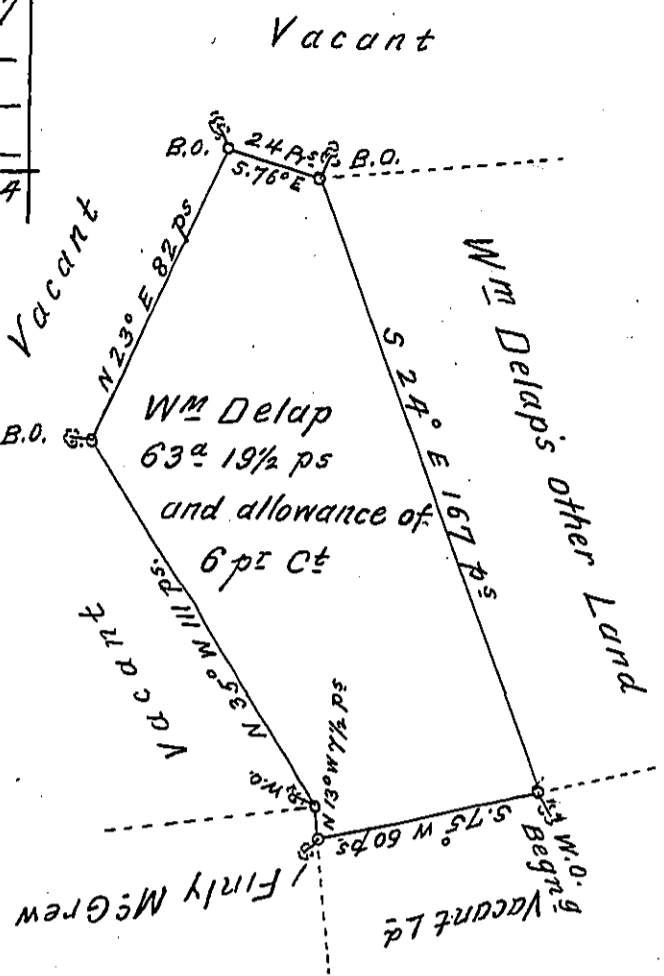


No	Course	Dist	North?	South?	East?	West?
1	S75W	60	—	15.5	—	58.
2	N13W	7½	7.3	—	—	1.7
3	N35W	111	90.9	—	—	63.7
4	N23W	82	75.5	—	32.	—
5	S76E	24	—	5.8	23.3	—
6	S24E	167	—	152.6	67.9	—
			173.7	173.9	123.2	123.4



A Draught of a tract of Land situate in Tyrone township
 York County Surveyed to William Delap in pursuance of a
 Warrant from the Honour^{le} Proprietaries for 50^a dated July the
 6th 1763 + Surveyed the 11th of the 12th m^o 1764 P^r

W^m Matthews

To Jⁿ^o Lukens Surveyor Gen^l
 + 20 Sep^r 1762

IN TESTIMONY that the above is a copy of the original remaining on file in
 the Department of Internal Affairs of Pennsylvania, made
 conformably to an Act of Assembly approved the 16th day of
 February, 1833, I have hereunto set my Hand and caused
 the Seal of said Department to be affixed at Harrisburg,
 this sixteenth day of July 1904.

Joseph P. Brown
 Secretary of Internal Affairs.